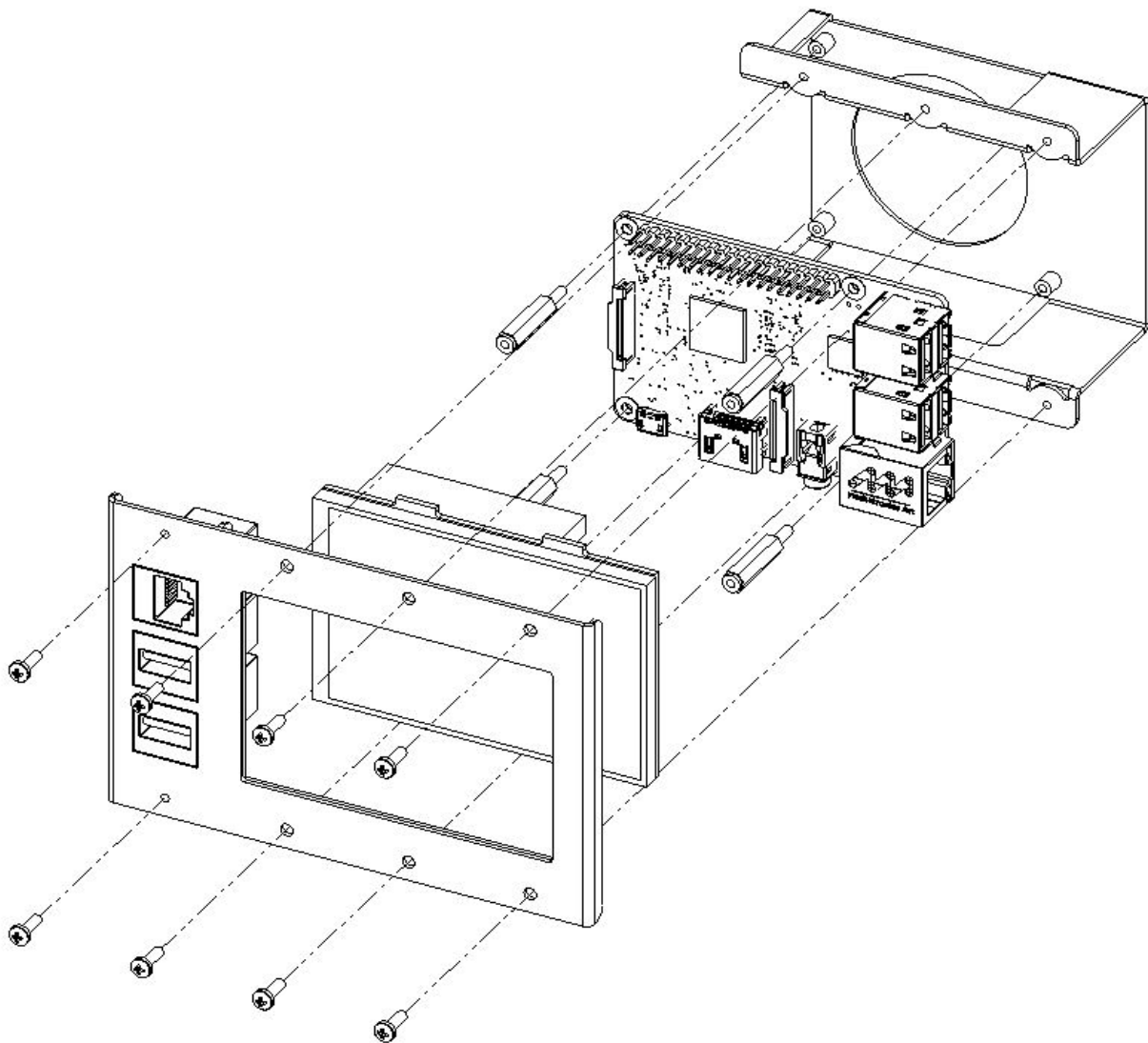


**Assembly instructions
3.5" TFT Display Insert
zr-sbc-907 (G)**



The smart difference.

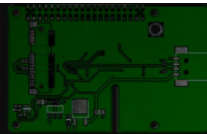


Fasten the display bracket

Fasten the Raspberry Pi to the bracket using the hex spacers M2.5x20 (included in the scope of supply).

Fasten the display on the Raspberry Pi.

Fasten the **Display Insert** to the Rack Mount Kit using the M2.5x6 screws (included in the scope of supply).



3.5Inch TFT Display

Technical specification



With the 3.5 Inch TFT Touchscreen-Display you can easily build a Mini-Tablet-PC based on an Raspberry Pi. The display, with a maximum resolution of 480x320 pixels, can be attached to the GPIO connections so that you won't need any mounting-skills.

Model	RB-TFT3.5
Resolution	480x320
Touchscreen Type	Resistiv
Touchscreen Controller	XPT2046
Colors	65536
Backlight	LED
Connection	GPIO Header
Display Ratio	8:5
Display Size	85 x 56 (mm)
EAN	4250236815114